

**MACROECONOMY**

EXCHANGE RATE		
Currency	Buying	Selling
USD	122.75	122.75
EUR	141.59	141.70
GBP	164.07	164.14

MONEY MARKET		
Indicator	Current	Previous
Call Money	9.93	9.94
Repo (Policy)	10.00	9.50
Reverse Repo (Policy)	7.50	8.00

FOREX RESERVE	
Month	BN US\$
April, 2026	35.10
March, 2026	34.12
February, 2026	35.11

REMITTANCE		
Month	MN US\$	BN TK.
May, 2026	3,425.03	420.42
April, 2026	3,127.30	383.85
March, 2026	3,752.21	460.11

T-BILL & T-BOND RATES	
Particulars	Rates (%)
91 days T-Bill	10.07
182 days T-Bill	10.17
364 days T-Bill	10.20
3 Years T-Bond	10.52

COMMODITY MARKET			
Commodity	Unit	Close Price	Change (%)
Crude Oil (Brent)	USD/Bbl	93.10	-2.03%
Gold	USD/t.oz	4069.4	-9.67%
Wheat	USD/bu	588.5	1.16%
Natural gas	USD/MMBtu	3.187	-4.47%

BANK DEPOSIT		
Particulars	Feb, 2026	Feb, 2025
Demand Deposits	2,027,860	1,903,033
Time Deposits	17,921,281	16,023,826
Total Deposit	19,949,141	17,926,859
Total Advances	17,756,935	16,707,827

**CAPITAL MARKET**

MARKET SUMMARY				
Market Movement	Today	Prev. Day	Change	% Change
<b>DHAKA STOCK EXCHANGE (DSE)</b>				
DSE BROAD INDEX (DSEX)	5520	5517	4	↑ 0.06%
DSE BLUECHIP SHARE INDEX (DS30)	2073	2080	(7)	↓ -0.35%
Market Capitalization	6,900,109	6,904,637	(4528)	↓ -0.07%
Market Turnover (Tk. In MN)	12387	12101	286	↑ 2.36%
<b>CHITTAGONG STOCK EXCHANGE (CSE)</b>				
CSE50	1109	1117	(8.31)	↓ -0.74%
CASPI	15196	15244	(48.50)	↓ -0.32%
Trade Volume (MN)	7.80	8.09	(0.29)	↓ -3.62%
Market Turnover (MN)	343.38	243.35	100.03	↑ 41.10%

TOP 10 LOW P/E COMPANIES		
Instrument	Sector	P/E
PADMAOIL	Fuel & Power	2.98
CITYBANK	Bank	3.06
SOUTHEASTB	Bank	3.16
MPETROLEUM	Fuel & Power	3.22
UTTARABANK	Bank	3.55
DUTCHBANGL	Bank	3.58
JAMUNAOIL	Fuel & Power	3.60
PRIMEBANK	Bank	3.79
NCCBANK	Bank	3.80
JAMUNABANK	Bank	4.07

INTRA DAY HIGHLIGHTS					
Listed Securities	A	B	N	Z	Total
Issues Advanced ↑	77	32	0	49	158
Issues Declined ↓	103	36	0	50	189
Issues Unchanged ↔	17	7	0	20	44
<b>Total Issues Traded</b>	<b>197</b>	<b>75</b>	<b>0</b>	<b>119</b>	<b>391</b>

RECENT CORPORATE DECLARATIONS				
Company	YR End	Div/Ofr Price	Record Date	AGM/RGT
CONTININS	31-Dec-25	5% C	15-Jun-26	13-Aug-26
EASTERNINS	31-Dec-25	15% C	16-Jun-26	14-Jul-26
DHAKAINS	31-Dec-25	10% C	17-Jun-26	20-Jul-26
LANKABAFIN	31-Dec-25	No Dividend	18-Jun-26	07-Jul-26

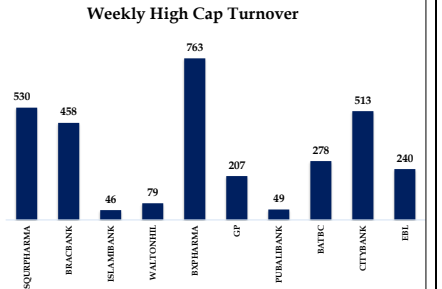
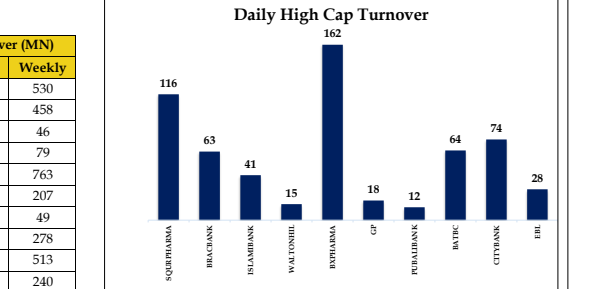
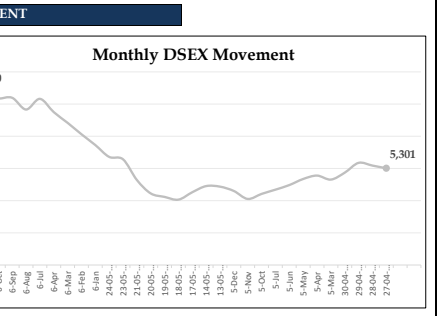
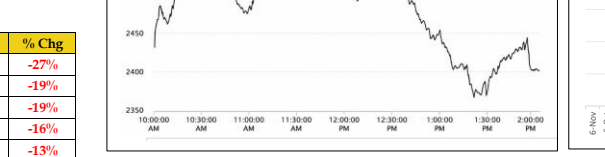
TODAY'S TOP 10 MARKET MOVERS							
Instrument	LTP	High	Low	YCP	Close	% Chg	Value (MN)
SAPORTL	58.80	59.00	54.70	54.50	58.80	↑ 0.08	402.25
IPDC	23.70	23.70	21.20	21.60	23.70	↑ 0.10	392.62
PEOPLESINS	61.10	65.50	60.40	61.70	61.10	↓ -0.01	254.29
BDTHAIFOOD	28.50	29.90	26.70	27.30	28.50	↑ 0.04	242.76
NCCBANK	16.30	17.10	16.10	16.80	16.30	↓ -0.03	234.45
LOVELLO	70.60	73.30	69.80	72.70	70.60	↓ -0.03	187.55
ANWARGALV	121.10	126.90	117.40	119.00	121.10	↑ 0.02	175.03
PROVATINS	50.10	52.50	49.20	51.10	50.10	↓ -0.02	169.45
GENEXIL	35.10	35.50	33.50	33.90	35.10	↑ 0.04	166.28
TILIL	56.30	57.60	52.50	52.40	56.30	↑ 0.07	164.64

TODAY'S TOP 5 GAINERS & LAGGERS						
Instrument	Close	High	Low	YCP	Change	% Change
BDTHAI	16.60	16.60	16.10	15.10	1.50	9.93%
ISLAMIBANK	29.10	29.10	23.90	26.50	2.60	9.81%
IPDC	23.70	23.70	21.20	21.60	2.10	9.72%
FEKDIL	17.20	17.20	15.80	15.70	1.50	9.55%
DGIC	29.80	30.10	27.20	27.40	2.40	8.76%
BEXIMCO	80.30	80.30	80.30	89.20	-8.90	-9.98%
PREMIERLEA	80.30	80.30	80.30	89.20	-8.90	-9.98%
FAREASTFIN	2.40	2.60	2.40	2.60	-0.20	-7.69%
FAREASTFIN	1.30	1.30	1.30	1.40	-0.10	-7.14%
FASFIN	1.30	1.30	1.30	1.40	-0.10	-7.14%

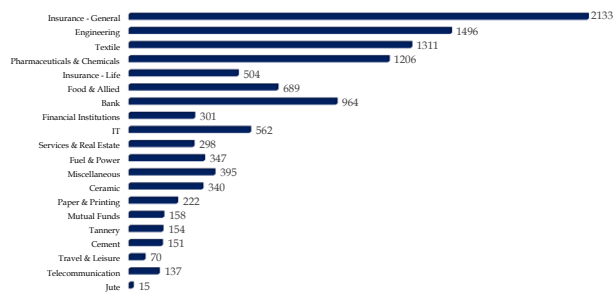
WEEKLY TOP 5 GAINERS				
Instrument	LTP	LWCP	Change	% Chg
SHYAMPSUG	238.90	169.10	69.80	41%
MERCINS	39.20	30.50	8.70	29%
PARAMOUNT	65.90	52.50	13.40	26%
DGIC	29.80	24.20	5.60	23%
IPDC	23.70	19.30	4.40	23%

WEEKLY TOP 5 LAGGERS				
Instrument	LTP	LWCP	Chg	% Chg
BEXIMCO	80.30	110.10	-29.80	-27%
PLFSL	1.30	1.60	-0.30	-19%
FAREASTFIN	1.30	1.60	-0.30	-19%
MEGCONMILK	39.30	46.80	-7.50	-16%
FASFIN	1.40	1.60	-0.20	-13%

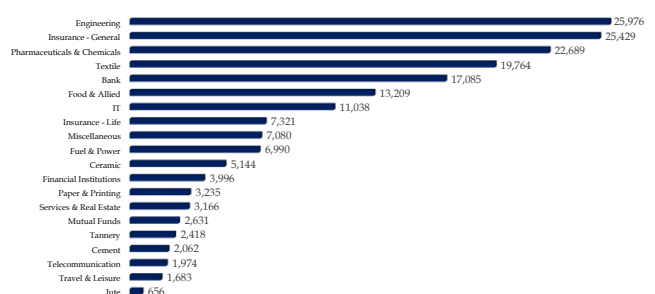
STATUS: HIGH CAP COMPANIES				
Company	FF Mkt. Cap (MN)	Turnover (MN)		
		Daily	Weekly	
SQRPHARMA	106,789	116	530	
BRACBANK	82,329	63	458	
ISLAMIBANK	46,766	41	46	
WALTONHIL	41,047	15	79	
BXPHERMA	39,025	162	763	
GP	33,460	18	207	
PUBALIBANK	37,611	12	49	
BATBC	30,094	64	278	
CITYBANK	35,812	74	513	
EBL	27,497	28	240	



Daily Sector Wise Turnover Bdt (MN)



Monthly Sector Wise Turnover Bdt (MN)



Sector	Mkt Cap (BDT BN)	Sector Return	PE(x)	Daily Turnover (BDT MN)	Turnover Δ%	Turnover as % of Mkt. Cap
Jute	2,628.83	-1.33%	20.35	9.11	-41.01%	0.35%
Travel & Leisure	-	58.40	58.40	84.72	20.20%	-
Telecommunication	522,772.54	-0.83%	11.21	73.07	-46.52%	0.01%
Cement	95,461.25	-0.57%	19.89	103.99	-31.22%	0.11%
Tannery	24,300.69	-0.22%	34.46	111.26	-27.58%	0.46%
Mutual Funds	25,005.85	-0.98%	0.00	136.17	-13.68%	0.54%
Services & Real Estate	26,421.76	4.25%	27.74	474.55	59.16%	1.80%
Paper & Printing	22,256.38	0.26%	0.00	188.16	-15.24%	0.85%
Financial Institutions	101,010.12	1.59%	13.64	661.31	119.45%	0.65%
Ceramic	21,752.69	2.69%	0.00	295.65	-12.97%	1.36%
Fuel & Power	289,911.57	-0.22%	9.93	376.13	8.27%	0.13%
Miscellaneous	189,776.47	-4.10%	50.00	358.03	-9.46%	0.19%
Insurance - Life	56,012.68	3.16%	28.19	928.55	84.14%	1.66%
IT	31,465.19	2.39%	32.00	601.94	7.20%	1.91%
Food & Allied	225,963.25	-1.24%	0.00	863.97	25.42%	0.38%
Bank	720,718.78	1.01%	5.50	811.39	-15.82%	0.11%
Textile	127,426.82	-0.02%	21.33	1239.23	-5.51%	0.97%
Pharmaceuticals & Chemicals	578,182.05	-0.21%	21.62	1170.68	-2.96%	0.20%

Script	Turnover as % of Free Float	Return %	Close Price	P/E	RSI (14)	Williams (14)	SMA (20)	SMA (90)
BDTHAIFOOD	16.23%	120.00%	28.50	11.86	75.10	-15.73	24.49	15.95
TILIL	15.68%	390.00%	56.30	12.13	79.37	-9.92	47.41	49.56
FEKDIL	12.59%	150.00%	17.20	19.26	80.68	0.00	14.77	15.90
STANDARINS	11.94%	70.00%	54.00	22.42	76.04	-23.85	48.27	40.94
PFISTMF	10.98%	20.00%	8.60	12.12	69.54	-15.79	7.71	5.51
FUWANGCER	9.14%	70.00%	15.10	12.05	72.92	-8.33	13.35	12.21
DSHGARME	8.45%	-300.00%	149.50	157.12	66.91	-29.09	131.24	116.01
IBP	7.77%	50.00%	15.90	25.41	70.94	-30.30	14.49	12.76
SAPORTL	7.74%	430.00%	58.80	34.47	75.80	-1.25	47.34	43.20
SUNLIFEINS	7.52%	-290.00%	79.00	0.00	63.83	-32.91	71.24	57.02

MARKET NEWS:

SYMBOL	SUBJECT	NEWS
NITOLINS	Q1 Financials	EPS was Tk. 0.31 for January-March 2026 as against Tk. 0.37 (restated) for January-March 2025; NOCFPS was Tk. 0.16 for January-March 2026 as against Tk. 0.18 (restated) for January-March 2025. NAV per share was Tk. 31.61 as on March 31, 2026 and Tk. 30.21 (restated) as on March 31, 2025.
SEMILLECMF	BSEC's consent for the conversion from close end to open end	BGIC has informed the following: "in reference to the BSEC letter no. BSEC/MF & SPV/MF-121/2014/219 dated March 15, 2026, we as Trustee of SEMI- Lecture Equity Management Fund would like to inform you that BSEC has accorded consent for the conversion of the above-mentioned Fund from close end to open end (cont.)

DISCLAIMER

This report (The Daily Market Insight) has no regard to the specific investment objectives, financial situation or particular needs of any specific recipient. The report is published solely for informational purposes and is not to be construed as a solicitation or an offer to buy or sell any security. The report is based on information obtained from sources believed to be reliable but is neither guaranteed as being accurate, nor is it a complete statement or summary of the securities, markets or developments referred to in the report. The report should not be regarded by recipients as a substitute for the exercise of their own judgment. Any opinions expressed herein are subject to change without notice. Neither BRAC EPL Investments Limited nor any of its employees accept no liability whatsoever for any loss or damage of any kind arising out of the use all or any part of this report. The information provided in this document is not intended for distribution to, or use by, any person or entity in any jurisdiction or country where such distribution or use would be contrary to law or regulation or which would subject BRAC EPL Investments Limited or its affiliates to any registration requirement within such jurisdiction or country. No part of this report may be reproduced or distributed in any manner without the written permission of BRAC EPL Investments Limited. This disclaimer applies to the Report in their entirety, irrespective of whether the Report is used or viewed in whole or in part.

BRAC EPL INVESTMENTS LIMITED

MD. ABDULLAH ABU SYADE, HEAD OF STRATEGY & INVESTMENT	MUNTAHA FERDAUSI, SENIOR ANALYST, RESEARCH TANZILA ZAHAN, SENIOR ANALYST, RESEARCH
---	---